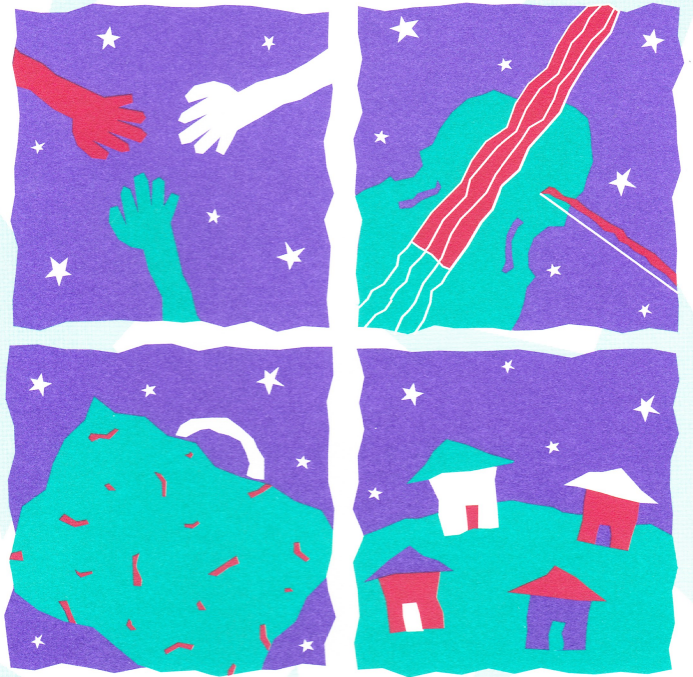


FOUR-PART HARMONY



**volunteers, musicians, managers,
and communities coming together**

Association of California Symphony Orchestras
28th Annual Conference

Hosted by the San Francisco Symphony

August 1-3, 1996

St. Francis Hotel, San Francisco

ACSO

CELEBRATE YOUR SEASON WITH
"A LITTLE BIT OF PARIS"
GURTMAN AND MURTHA
PROUDLY PRESENT

Raquel Bitton

SINGS

"A Little Bit of Paris"

ARRANGEMENTS AVAILABLE FOR FULL ORCHESTRA
SUNG IN BOTH ENGLISH AND FRENCH

Not since Edith PIAF has a French songstress captured the hearts of American audiences the way RAQUEL BITTON has.

From intimate settings to concert halls, RAQUEL BITTON sings the music of Maurice Chevalier, Charles Trenet, Lucienne Boyer, Paul Misraki, Yves Montand, Josephine Baker, Marlene Dietrich, Edith Piaf and the more contemporary composers like Michel Legrand and Jacques Brel, RAQUEL BITTON recreates that era with a repertoire that is an elegant blend of old, new, familiar and obscure, as well as songs written by American composers about Paris.

"The presentation is exquisite...Bitton is superb in sight and song...BITTON is a magnificent singer. I could listen to her combined English/French renditions for hours, not minutes. her intensity and authenticity are utterly overwhelming. She loves to sing, she loves the songs She has selected and loves the crowd that shares her delight in the songs she does so brilliantly. One wishes along the way, to come up for air, to shout and clap and whistle in tribute to the glorious music and to the captivating BITTON".

Philip Elwood, San Francisco Examiner

GURTMAN AND MURTHA ASSOCIATES

450 Seventh Avenue, Suite 603 / New York, NY 10123

(212) 967-7350 FAX (212) 967-7341



Collaboration is the key word of the 90s in arts management: Harmony is the word we have used as our Conference theme to showcase volunteers and management working together, orchestras working with other organizations, and musicians and volunteers working in our communities. Harmonious examples of collaboration are plentiful during the three days of this Conference. Take them home with you and implement them to make your own harmony!

WELCOME DELEGATES

Called for photos 6/16/97



Welcome to San Francisco! The musicians, board, and staff of the San Francisco Symphony are pleased to be your hosts as you gather in our city for ACSO's 28th Annual Conference. ACSO has planned three full days of sessions, offering information and insights on everything from artistic decision-making to software support for your organization. Never before have careful management and long-range strategic

planning been so important to orchestras. Our gathering here for this Conference is a sign of our commitment, and what we take home with us will help put that commitment to work.

But this Conference isn't only about work. San Francisco is a city of great cultural attractions, great restaurants, great views. I trust that, along with your attendance at the Conference, you'll have the opportunity to sample some of what makes our city so special. I hope you find these three days with us stimulating, rewarding, and memorable.

Nancy H. Bechtle

Nancy H. Bechtle, President
San Francisco Symphony

Pos. Pres. Barbara Steinwald



The Board of Directors and I welcome you to San Francisco and to the Association of California Symphony Orchestras' 28th Annual Conference. We hope you will make the most of this Conference by attending the wide range of workshops, seminars, panel presentations, as well as our musical and social activities.

Our thanks go to Nancy Bechtle and the San Francisco Symphony staff for everything they have done as our hosts. It is important to note that we could not produce this Conference if it were not for generous underwriters and you, our participants.

Similarly, ACSO could not function without its dedicated Board of Directors. They work tirelessly to develop the quality annual programming for which ACSO is known. It is my pleasure to serve with these wonderful men and women. Together, we extend a special thank you to ACSO's executive director, Kris Saslow, and her staff.

Thank you for your support and commitment to promoting symphonic music in the state. You play a key role in your own organizations and you are very important to ACSO.

Mark A. Jordan

Mark A. Jordan, President
ACSO

QUICK LOOK

TO DO Done 6-5-97

THURSDAY, August 1, 1996

10:00 am	Volunteer Workshop	St. Francis Suite
1:00 pm	Peer Forums	California West
3:00	Dr. Robert Greenberg	Colonial
4:45	Annual Meeting	Oak Room
6:30	Pops Concert San Francisco Symphony	Davies Symphony Hall *

FRIDAY, August 2, 1996

8:30 am	Fund-Raising Seminar	St. Francis Suite
9:00	World Music Programs	Elizabethan B
9:00	Cost Containment	Elizabethan D
10:45	Innovative Programming	Elizabethan B
10:45	Community Collaborations	Elizabethan C
12:15 pm	Luncheon Gordon Getty, honoree	Colonial
2:30	Pop Pop Pops!	Elizabethan A
2:30	New Ideas in Philanthropy	Elizabethan C
4:15	Musical Connections	Elizabethan A
4:15	Software and Technology	Elizabethan C
4:15	Troubles into Successes	Elizabethan D
4:15	Great Conductors on Film	Yorkshire
6:00	President's Reception	St. Francis Suite

SATURDAY, August 3, 1996

8:00 am	Legislative Update	Elizabethan A
9:00	Marketing and Publicity	Elizabethan C
9:00	Youth Orchestra	Elizabethan D
9:30	Management Case Study	Elizabethan A/B
10:45	Musicians as Educators	Elizabethan C
10:45	Great Fund-Raising Events	Elizabethan D
12:15 pm	Luncheon Robert Kapilow, speaker	Colonial
2:15	Commissioning	Elizabethan A
2:15	5 Mistakes of Employers	Elizabethan C
2:15	Trusteeship	Elizabethan D
3:45	Henry Fogel and Peter Pastreich	California West
7:00	Beach Blanket Babylon	Club Fugazi *

SUNDAY, August 4, 1996

2:00 pm	Stern Grove Festival San Francisco Ballet	Stern Grove * 19th Ave. & Sloat Blvd.
---------	---	---

* Transportation on your own. Anyplace in San Francisco is easily reached by cab, BART, and/or Muni. For Stern Grove, take buses 23-Monterey and 28-19th Ave.

YOUNG CONCERT ARTISTS

The Future of Music

"A trailblazing organization that has launched into professional orbit more than 100 important talents."

Since 1961, this non-profit organization has discovered and launched the careers of such great performers as Emanuel Ax, Pinchas Zukerman, Richard Goode, Carter Brey, Murray Perahia,

Ani Kavafian, The Tokyo String Quartet, and Dawn Upshaw. YCA Alumni are among the most influential figures in the music world. They are active all over the world as soloists, conductors, in chamber music, founders and artistic directors, and as teachers. YCA Alumni can currently be heard on more than a thousand CDs and have won 9 Grammy awards.

"Delightful surprise has become Young Concert Artists' stock-in-trade."

The Washington Post

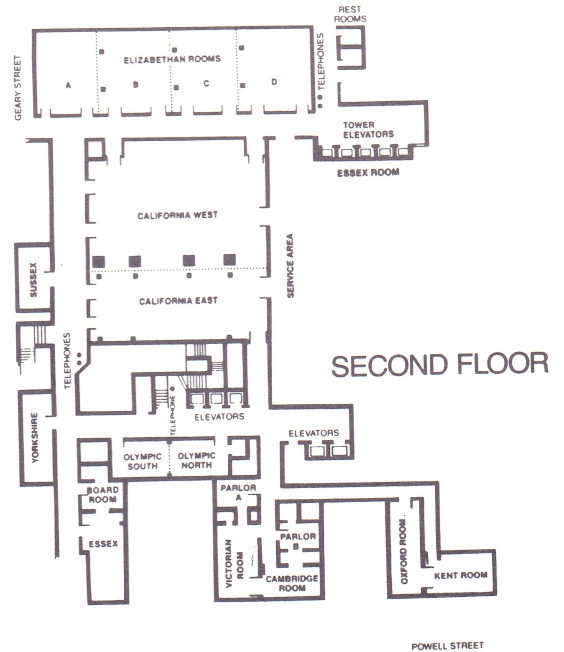
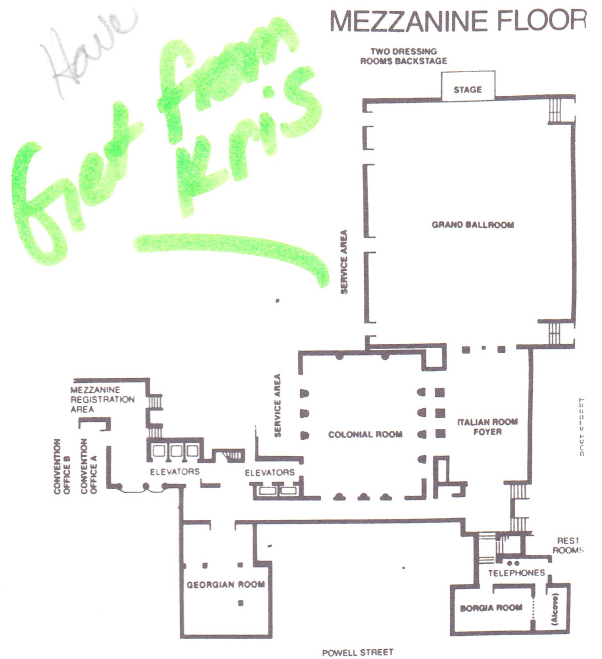


Adham Sakran, marmalade - Photo Christian Storer

For the current roster, and to talk, call:
YOUNG CONCERT ARTISTS, INC.
 Susan Wadsworth, Director
 Monica J. Felkel, Artist Manager
 250 West 57 Street, New York, NY 10019
Telephone (212) 307-6655 **Fax:** (212) 581-8894
World Wide Web: <http://www.arts-online.com/yca>
E-mail: 102061.1156@compuserve.com



Complete interactive solutions and strategies: Millennium Productions, Inc.



CONFERENCE NOTES

Conference Chairman

Patricia Gessner

Goodie Bag Acquisition and Coordination

Betty Ustach

Orchestra Boutique

Barbara Burger

On-Site Coordinators

Trudi Benford

Jennifer Pimbley

Many thanks to the members of the ACSO Conference Committee, the ACSO Board of Directors, the staff and volunteers of the host orchestra, and those of you who contributed to this Conference with your time and expertise.

CONFERENCE REGISTRATION AND TICKETS California East

Hours:

Wednesday, July 31 5:00 PM - 8:00 PM

Thursday, August 1 8:00 AM - 5:00 PM

Friday, August 2 8:00 AM - 5:00 PM

Saturday, August 3 8:00 AM - 5:00 PM

Conference registration and special event tickets can be paid for by cash, check, VISA, or MasterCard. Make checks payable to ACSO. Tickets for meals or concerts cannot be exchanged or refunded.

RESOURCE ROOM California East

Orchestra Brochures • Artist Manager Brochures and Rosters
Computer Information • Orchestra Boutique
Coffee served Friday and Saturday 8 AM - 10 AM

PLEASE WEAR YOUR NAME BADGE AT ALL TIMES

Only registered delegates or speakers wearing badges will be allowed in meeting rooms.

6

SPECIAL THANKS

Special thanks to the following friends of ACSO who have provided in-kind services or merchandise during the year or for the Annual Conference:

Artsmarketing Services, Inc.
Essary Dal Porto & Lowe, Certified Public Accountants
Pacific Symphony Orchestra
SFO Airporter
Saintsbury Winery
San Francisco Symphony
The Westin St. Francis Hotel

Thank you to "Goodie Bag" donors:

Borders Books
Christina Diver
Anne Endsley, Four Seasons Almonds, Ripon
Ghirardelli Chocolate
Macy's
See's Candies
Tom's Printing
Yamaha Corporation of America

Follow-Up

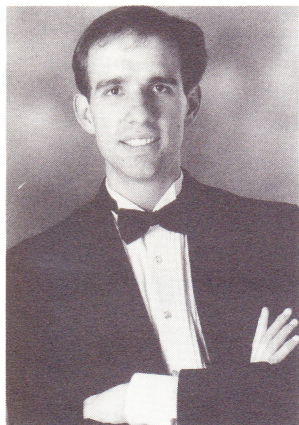
Thank you to the many organizations who have donated clever and interesting items to the ACSO Boutique.

SHOP AT THE ACSO BOUTIQUE California East

All proceeds benefit the
Association of California Symphony Orchestras.

7

Jonathan Wentworth Associates
Rising Stars You Should Get to Know



"(Christopher) Taylor should be watched. He may be one of the most impressive young pianists on the horizon today"

The Washington Post

Christopher Taylor,
piano

Van Cliburn Bronze Medalist
 Avery Fisher Career Grant Winner

Henryk Szeryng Competition Gold Medalist
 Houston Symphony Concerto Competition Prizewinner

Lee-Chin Siow,
violin

"Here was a lark that ascended with the utmost grace and sang in the loveliest of voices."

The Cleveland Plain Dealer



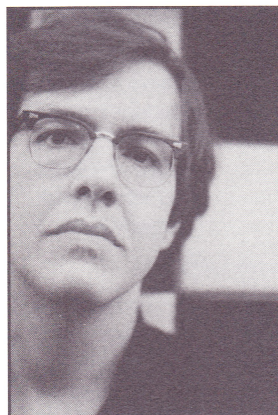
Have you visited our information-filled www site?
<http://members.gnn.com/jwentassoc/webjwa/jwa.htm>

JONATHAN WENTWORTH ASSOCIATES LTD.

100 Stevens Ave., Suite 503
 Mt. Vernon, NY 10550
 914.667.0707 fax .0784
 JWentAssoc@aol.com

Del Rosenfield Associates

Bruce Brubaker PIANIST



in recital at the
 L.A. County Museum of Art

music of
 Brahms and Philip Glass
 (Los Angeles premiere)

Sunday, November 24 at 4 pm

"Acute, free-spirited, lyrical, moving...a big-toned, brainy, fire brand kind of music making that made you think of — dare one say this? — Rudolf Serkin."

The Boston Globe

Symphonic Hollywood

MUSIC FROM THE MOVIES

selections from

Beauty and the Beast, Braveheart, Breakfast at Tiffany's, Jurassic Park, Schindler's List, Star Wars, Vertigo and many others

Joel McNeely, conductor
 with guest violinist **Margaret Batjer**

featuring works by

Bernstein, Goldsmith, Herrmann, Mancini, McNeely, Menken, Newman, North, Rozsa, Sarasate, Waxman, Williams, and others

714 Ladd Road, Riverdale, NY 10471-1204
 (718) 549-5687 Fax (718) 548-4313
 e-mail: delroseDRA@aol.com

MAJOR GIFTS

California Arts Council
 The Ann and Gordon Getty Foundation
 The Clarence E. Heller Foundation
 The James Irvine Foundation
 Thomas R. Noonan
 The David and Lucile Packard Foundation
 Dr. Sylvia Shepherd

Done

CONFERENCE SPONSORS

ASCAP
 Artsmarketing Services Inc.
 CHL ARTISTS of Beverly Hills
 Columbia Artists Management, Inc.
 Stephen Dunn & Associates
 Inn at the Opera
 The Law Firm of Keesal, Young & Logan
 MSGI/Metro Arts
 The Law Firm of Musick, Peeler & Garrett
 The David and Lucile Packard Foundation
 Schweickert & Company
 Wells Fargo Bank
 Young Concert Artists

PATRONS: Gifts \$300 and Above

Tim Beswick	San Jose Symphony
Peggy E. Duly	Benicia
Pauline Fisher	Santa Rosa Symphony
Neal Hefti	Beverly Hills
Mark A. Jordan	Modesto Symphony
Sharon C. McNalley	Los Angeles Chamber Orchestra
Stephen J. M. Morris	Pasadena Symphony
Joseph Truskot	Monterey County Symphony

SPONSORS: Gifts \$150-\$299

Corrick Brown	Santa Rosa Symphony
Barbara Burger	Santa Barbara Symphony
Amy Carson-Dwyer	Colbert Artists Management
Joanne Corbett-Barnes	Corbett Arts Management, Ltd.
Dean Corey	Philharmonic Society of Orange County
Denis de Coteau	San Francisco Ballet
Suzanne M. Dewar	Assn. of Calif. Symphony Orchestras
Christina Diver	San Francisco Conservatory of Music
Ernest Fleischmann	Los Angeles Philharmonic
Patricia Gessner	San Francisco Symphony
George N. Hale, Jr.	San Francisco Symphony
Mimi Horowitz	Peninsula Symphony
Mitchell Sardou Klein	Peninsula Symphony North
Diane Lent	Modesto Symphony
Ronald Marks	Sierra Symphony Orchestra
Lynda Sue Marks-Guarnieri	Long Beach Symphony
Jim Medvitz	Pacific Symphony Orchestra

Phil Miles	Pasadena Pops
Christopher Minnes	Long Beach Symphony
Millie Mitchell	California Symphony
Irene Klug Nielsen	Fresno
Helen Ciriello Norton	Riverside
Lynn Osmond	Sacramento Symphony
Jung-Ho Pak	Idylwild School of Music
Peter Pastreich	San Francisco Symphony
Kimberly P. Phillips	Los Angeles Chamber Orchestra
Asher Raboy	Napa Valley Symphony
Wayne Shilkret	Pasadena Symphony
Mrs. J. D. Smith	Santa Rosa Symphony
Susan Swinburne	Suzanne Campi and Associates
Bruce D. Thibodeau	Los Angeles Chamber Orchestra
Elizabeth Ustach	Modesto Symphony
Ann Vander Ende	Philharmonia Baroque Orchestra
Cynthia Weichel	Santa Rosa Symphony Youth Orchestras

SUSTAINING MEMBERS: Gifts \$75-\$149

Phyllis Apfel	Santa Rosa Symphony
Larry Balakian	Fresno Philharmonic
Leni Isaacs Boorstin	Los Angeles Philharmonic
Rhoda Boyd	Marin Symphony
Martha Cheadle	Long Beach Symphony
Richard D. Colburn	Los Angeles Philharmonic
Richard Corbett	Santa Rosa Symphony
John A. Courson	Sacramento Symphony
JoAnn Falletta	Long Beach Symphony
Rhoda H. Goldman	San Francisco Symphony
Leonid Grin	San Jose Symphony
Josephine Gumbiner	Long Beach Symphony
John Hancock	Long Beach Symphony
Cricket Handler	Handler Management
Jean Harrison	Santa Rosa Symphony
RaeMeda Janzen	Modesto Symphony
Bernard Karian	Fresno Philharmonic
Anne Ligda	Vallejo Symphony
David Marsten	Santa Rosa Symphony
Kathryn Martin	UC San Diego Music Dept.
Carole S. Miller	Pacific Symphony Orchestra
Patricia A. Mitchell	L.A. Music Center Opera
Diane Moore	Pacific Symphony Orchestra
Mary Newkirk	Long Beach Symphony
Thomas Osborn	Downey Symphony
Peggy Peterson	San Luis Obispo County Symphony
Genevieve Power	Oakland East Bay Symphony
George G. Ramirez	Stockton Symphony
Ben Reddish	Stockton Symphony
Carol Ross	Los Angeles Chamber Orchestra
Donald M. Ross	Antelope Valley Symphony
Michael Royer	Modesto Symphony
Sara Salsbury	El Camino Youth Symphony
Kris Woodard Saslow	Assn. of Calif. Symphony Orchestras
Mary Schnepf	Inland Empire Symphony
Gang Situ	Chinese Cultural Productions
David Smythe	Sierra Symphony Orchestra

Linda L. Temple
Suzanne Turbeville
Barbara Day Turner
Elise Unruh
Francis Van Ausdal
David Willmon
Nahum Zimmer

Rohnert Park Chamber Orchestra
Masterworks Chorale
San Jose Chamber Orchestra
Santa Barbara Civic Light Opera
Rogue Valley Symphony
Riverside County Philharmonic
Los Angeles Chamber Orchestra

CONTRIBUTORS: Gifts \$46-\$74

David Amos
Alice Asquith
Michael Bates
Karine Beesley
Robert Blakey
George Boomer
Michael Chappell
Bettye P. Ferguson
Yehuda Gilad
Jay Goetting
Dick Pantages
Kay Raney
Lori M. Richardson
Kathie Svoboda
De-yi Tang
Brenda Jew Waters

San Diego
Los Angeles Philharmonic
Yamaha Corporation of America
The Ford Theatre Foundation
Long Beach Symphony
Boomer Enterprises, Inc.
Fresno Philharmonic
San Francisco Symphony
Malibu Music Festival Orchestra
Jarvis Conservatory
Fremont Symphony
Coastside Community Orchestra
San Francisco Symphony
Redding Symphony
San Francisco
West Coast Connections

Del Rosenfield Associates

Artist Roster 1996-98

Soloists

PIANISTS

Bruce Brubaker
Babette Hierholzer
Masanobu Ikemiya
Mina Miller
Míceál O'Rourke
John Bell Young

VIOLINISTS

Margaret Batjer
Chin Kim

CELLIST

Steven Honigberg

FLUTIST

Lisa Hansen

Conductors

Gisèle Ben-Dor
Sergio Bernal
Walter Proost

Special Program

Symphonic Hollywood
Music from the Movies
conducted by Joel McNeely
guest artist violinist Margaret Batjer

714 Ladd Road, Riverdale, NY 10471-1204
(718) 549-5687 Fax (718) 548-4313
e-mail: delroseDRA@aol.com

Seldy Cramer Artists

representing

Jean-Philippe Collard, *pianist*

Alan Feinberg, *pianist*

Eduardo Fernández, *guitarist*

Angela Hewitt, *pianist*

Louis Lortie, *pianist*

Elmar Oliveira, *violinist*

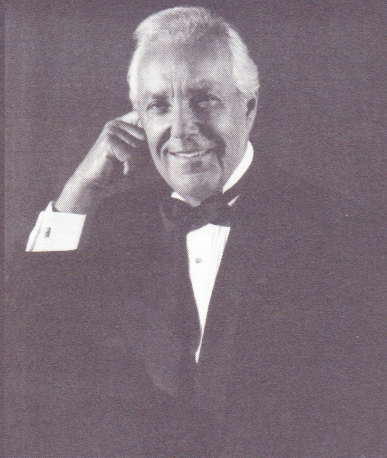
SELDY CRAMER ARTISTS

3436 Springhill Road • Lafayette, California 94549

(across the bay from San Francisco)

Phone: 510/299-0623 • Fax: 510/299-0624

For more
Pizazz
at your next
Pops...



"A wonderful voice...
marvelous stage personality...
audiences love him."

- Michael Nowak, Music Director
San Luis Obispo Symphony

Richard Summers

BARITONE

Music of

Berlin,
Rodgers and
Hammerstein,
Gershwin &
other favorites

Handler Management

Cricket Handler
805-542-0506
805-542-0507 fax

III

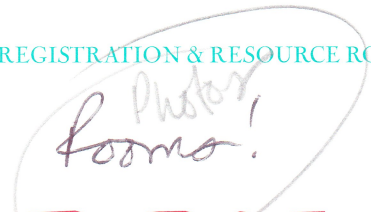
WEDNESDAY, JULY 31

3:00 pm-
4:30 pm
Georgia

ACSO BOARD MEETING

5:00 pm-
8:00 pm
California
East

REGISTRATION & RESOURCE ROOM



THURSDAY, AUGUST 1

8:00 am-
5:00 pm
California
East

REGISTRATION & RESOURCE ROOM

10:00 am-
1:00 pm
St. Francis
Suite
12th floor

PRELUDE: VOLUNTEER WORKSHOP
AND LUNCHEON

**Challenging the Assumptions of
How Volunteers Work**

This three-hour workshop will discuss current trends in volunteerism and show you how your volunteer association can and must make the journey to change, using "episodic" volunteers, establishing new administrative guidelines, and re-focusing its work with the orchestra. Workshop format includes presentations, roundtable discussions and problem-solving sessions. Come to this workshop with an open mind to share new ideas with your colleagues from other guilds, leagues, and volunteer associations. Managers welcome.

Moderator: **Diane Lent**, president, Modesto Symphony
Speakers: **Debbie Chinn**, director, Volunteer Council, San Francisco Symphony
Jim Perry, volunteer, San Francisco Symphony

1:00 pm-
2:30 pm
California
West

UPBEAT: PEER FORUMS

Among the most popular events at the conference, these forums present an ideal opportunity to share information with your colleagues at informal round tables. For managers of like-budget organizations.

Coordinator: **Carol Handelman**, director of operations/finance, Philharmonia Baroque Orchestra

Table 1

Managers/Orchestras
budgets less than \$100,000
Linda Temple, executive director,
Rohnert Park Chamber Orchestra

15



JANE DAVIS INC.
ARTIST MANAGEMENT

SOLOISTS

GARY KARR
Doublebass

BONITA BOYD
Flute

NICHOLAS GOLUSES
Classical Guitar

CONDUCTORS

APO HSU
Music Director & Conductor
Oregon Mozart Players
Springfield Symphony Orchester, MO

PHILIP GREENBERG
Music Director & Conductor
Savannah Symphony Orchestra

ZELMAN BOKSER

ENSEMBLES

BOYD-GOLUSES DUO

Bonita Boyd
Flute

Nicholas Goluses
Classical Guitar

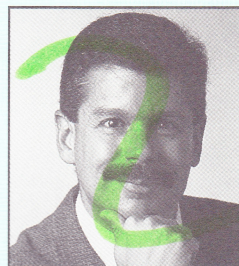
61 TAUNTON LAKE ROAD, NEWTOWN, CT 06470 PHONE: 203.426.9768 FAX: 203.270.7423

Table 2	Managers/Orchestras budgets of \$100,000-\$250,000 Liz Dossa , executive director, <i>Peninsula Symphony North</i>
Table 3	Managers/Orchestras budgets of \$250,000-\$500,000 George A. Sinclair , executive director, <i>Stockton Symphony</i>
Table 4	Managers/Orchestras budgets of \$500,000-\$1,000,000 Mike Royer , general manager, <i>Modesto Symphony</i>
Table 5	Managers/Orchestras budgets over \$1,000,000 Wayne Shilkret , executive director, <i>Pasadena Symphony</i>
Table 6	Managers/Trustees of Youth Orchestras Amy Crain , administrative coordinator, <i>Youth Music Monterey</i>
Table 7	Conductors Mitchell Sardou Klein , music director, <i>Peninsula Symphony North</i>
Table 8	Development Directors Deirdre Hallman , development director, <i>Philharmonia Baroque Orchestra</i>
Table 9	Marketing/Public Relations Directors Michele Prisk , assistant director of marketing, <i>San Francisco Symphony</i>
Table 10	Operations/Assistant Managers Jim Medvitz , operations director, <i>Pacific Symphony Orchestra</i>
Table 11	Finance Directors Jed Coffin , finance director, <i>Monterey County Symphony</i>
Table 12	Education Directors and Education Volunteers Kelly Ruggirello , director of education, <i>Pacific Symphony Orchestra</i>

3:00 pm-
4:30 pm
Colonial
Room

CURTAIN UP: OPENING PLENARY SESSION

The Composer is Always Right



Guest Speaker:
Robert Greenberg, Ph.D.

Dr. Greenberg is chair of the Department of Music History and Literature and director of the Adult Extension Division at the San Francisco Conservatory of Music. He is the recipient of numerous composition awards, including three Nicola de Lorenzo prizes, Meet the Composer

Grants, and commissions from the Koussevitzky Foundation, the Alexander String Quartet, and XTET. He is creator and lecturer of the San Francisco Symphony Discovery Series and is nationally known through his tapes and videos presented by The Teaching Company.

Welcome: **Mark A. Jordan**, president, ACSO

Introduction: **Patricia Gessner**, director of marketing,
San Francisco Symphony

4:45 pm-
5:45 pm
Oak Room

ACSO ANNUAL MEETING: OPUS 28

Presentation of the inaugural Volunteer
"Most Valuable Player" Awards

6:30 pm-
8:00 pm
Davies
Symphony
Hall

MUSICAL REPAST: DINNER AND CONCERT

San Francisco Symphony Pops Concert

Emil de Cou, conductor

Guest artist **Rosemary Clooney** sings music of
Nelson Riddle

Dinner: Wattis Room

Dessert: Served at intermission, Wattis Room

Transportation to Davies Symphony Hall (Van Ness
at Grove) is on your own.

*Sponsored by Inn at the Opera and
the San Francisco Symphony*

8:00 am-5:00 pm
REGISTRATION & RESOURCE ROOM
California East

8:30 am-12:00 pm
SPECIAL SEMINAR

St. Francis Suite
12th Floor

A Practical Approach to Fund Raising



G. Michael Gehret, vice president for development and marketing, Chicago Symphony Orchestra



Kay Sprinkel Grace, San Francisco consultant; faculty of The Fund Raising School, Indiana University

A serious discussion of an old refrain — how can we support our musical programs in today's economy? Discussions include the shifting priorities of corporations and foundations, auditing the annual fund, renewal and upgrade programs, major donor activities, and information and data management.

Introduction: **George A. Sinclair**, executive director, Stockton Symphony

The \$55 seminar fee for admission, materials, coffee, and croissants, is in addition to the regular Conference registration.

9:00 am-10:30 am
Concurrent Sessions
Elizabethan B

1. QAWWALI RHAPSODY: WORLD MUSIC PROGRAMS

Global cross-fertilization is the musical watchword of the 90s. Take a look at some new concert series on specialized programming.

Speakers: **Lawrence Duckles**, production manager, Philharmonic Society of Orange County
Lynn Osmond, executive director, Sacramento Symphony

Elizabethan D **2. POCO A POCO: COST CONTAINMENTS**

The *leitmotifs* of today's business world are downsizing, consolidating, and streamlining. When should you re-orchestrate for a chamber ensemble without compromising artistic quality? This session will offer practical ways to reduce overhead by taking a hard look at your numbers for workers' comp, staffing, artists' fees, marketing, and development.

Moderator: **Jed Coffin**, finance director, Monterey County Symphony

Panelists: **Steven Bronfenbrenner**, chief financial officer, San Francisco Ballet
Julie Haseldon, controller, San Francisco Ballet

Sponsored by Schweickert & Co.

10:45 am-12:00 pm
Concurrent Sessions

Elizabethan B 1. THE SURPRISE SYMPHONY: INNOVATIVE PROGRAMMING

Add excitement to your [musical] life. Stretch boundaries and entice your audiences with unexpected programming. This session takes a look at your Classic series and suggests ways to jazz it up.

Speakers: **Gregg Gleasner**, artistic administrator, San Francisco Symphony

Seldy Cramer, president, Seldy Cramer Artists

Elizabethan C 2. HARMONY AT HOME: COMMUNITY COLLABORATIONS

Join us for an in-depth look at maximizing community resources, building new audiences, and developing cultural awareness programs. Other topics include the creation of collaborative activities, securing grants, and devising everyday activities which expand the ethnic make up of trustees, musicians, volunteers, staff, and audience members.

Moderator: **Joseph Truskot**, executive director, Monterey County Symphony

Panelists: **Rae Grad**, director, Institute for Collaborative Studies, CSU Monterey Bay
Michael Howe, executive director, East Bay Foundation
Mary Newkirk, executive director, Long Beach Symphony

12:15 pm- BRAVO! LUNCHEON

2:15 pm

Colonial Room

Honoring Gordon Getty

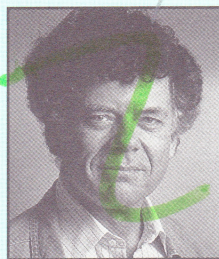
A tribute to philanthropist Gordon Getty who has given generously to California orchestras through the Ann and Gordon Getty Foundation.

Emcee: **James Schwabacher, Jr.**

Pianist: **Alain Lefevre**

Tributes: **Nancy Bechtle,**

president, San Francisco Symphony
Nicholas McGegan, *music director, Philharmonia Baroque Orchestra*
Louis G. Spisto, *executive director, Pacific Symphony Orchestra*



*Sponsored by Bank of America
 Piano provided by Yamaha Corporation of America*

2:30 pm-

4:00 pm

Elizabethan A

Concurrent Sessions

1. POP POP POPS!

Variation has been a staple of musical creativity for centuries. See how fresh ideas in programming and innovative production can work in harmony to add new dimensions to pops programs (and enhance ticket sales).

Moderator: **James Reeves,** *general manager, Sacramento Symphony*

Panelists: **Emil de Cou,** *principal pops conductor, San Francisco Symphony*

Patricia Gessner, *director of marketing, San Francisco Symphony*

Michael Krajewski, *music director, Modesto Symphony*

Jim Medvitz, *director of operations, Pacific Symphony Orchestra*

Sponsored by ASCAP

Elizabethan C

2. C-NOTES AND LOOSE CHANGE: NEW IDEAS IN PHILANTHROPY

Tchaikovsky had Mme. von Meek, Handel had King George I, Copland had Elizabeth Sprague Coolidge. Is there a patron in your midst? Author of the popular book *Wealthy and Wise*, this renowned philanthropist offers a practical and principled guide to responsible giving and provides insight for better donor understanding.

Speaker: **Claude Rosenberg, Jr.,** *chairman, RCM Capital Management*

Host: **Mark A. Jordan,** *president, ACSO*

4:15 pm-

5:45 pm

Elizabethan A

Concurrent Sessions

1. TEACHER TALK: MUSICAL CONNECTIONS

A panel of music and non-music educators shows how symphony orchestras can connect with teachers to meet the needs of our youth by more effectively building teacher committees and educator advisory panels, involving teachers at the inception of program planning, and developing concert materials.

Moderator: **Kelly Ruggirello,** *director of education, Pacific Symphony Orchestra*

Panelists: **Bob Athayde,** *music teacher, Stanley Intermediate School, Lafayette School District*

Cheryl Curtis, *principal, Bret Harte Elementary School, San Francisco Unified School District*

Don Doyle, *music advisor, middle schools, Los Angeles Unified School District*

Susan Stauter, *artistic director for high schools, San Francisco Unified School District*

Sponsored by Dr. Sylvia Shepherd

Elizabethan C

2. SATB: BLENDING SOFTWARE AND TECHNOLOGY FOR OFFICE HARMONY

Basic harmonic forces on the information superhighway: **S**oftware; **A**ccess; **T**echnical support; **B**its and bytes. Let technology make your life easier. Use internet access (e-mail), computer fax, and data bases among others to accomplish more than you ever thought possible.

Speaker: **Larry R. Larson,** *technology and planning consultant; George Coates Performance Works*

FRIDAY, AUGUST 2 *Continued*

Elizabethan D 3. DA CAPO: TURN TROUBLES INTO SUCCESSES

Go back to the beginning of those near-disasters and discover ways to re-orchestrate them for success.

Moderator: **Shirley Lewis**, president/CEO, San Jose Symphony
 Panelists: **Lucretia Butler**, president, Friends of the Monterey County Symphony
John Larry Granger, music director, Santa Cruz County Symphony
Judy Patrick, executive director, The Women's Philharmonic
Cathy Stapert, executive director, Santa Barbara Chamber Orchestra

Yorkshire 4. LEGENDARY CONDUCTORS ON FILM II

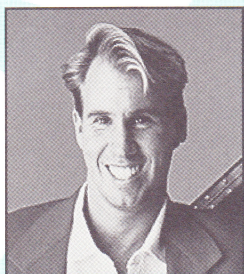
Returning by popular demand, you will see rare footage from this unique collection covering the era 1913 to the present including archival materials, concert, and rehearsal films. Most have never been seen in the U.S.

Speaker: **Dr. Charles Barber**, conductor

EMPEROR CONCERTO: PRESIDENT'S RECEPTION: FOR ACSO MAJOR DONORS
by Invitation

6:00 pm-7:30 pm
St. Francis Suite
 12th Floor

Pianist: **Danny Wright**



Sponsored by
 CHL ARTISTS of Beverly Hills

EVENING ON OWN

8:00 am-5:00 pm
California East
 REGISTRATION & RESOURCE ROOM

8:00 am-9:00 am
Elizabethan A
ASOL ON TOUR: WASHINGTON COMES TO CALIFORNIA

With the 1996 election under way and fundamental changes in the role of public support for the arts, advocacy — the capacity to make our views known — is more critical than ever. John will outline the new challenge to orchestras from members of Congress who want to change our tax-exempt status, and from proposals that will alter the patterns of private philanthropy in major ways. Since his presentation last year, much has changed — some for the better, some for the worse — but he promises a lively wake-up!

Speaker: **John D. Sparks**, director of government affairs, American Symphony Orchestra League

9:00 am-10:30 am
Elizabethan C
Concurrent Sessions

1. FORTISSIMO: MARKETING AND PUBLICITY WHEN THERE'S CHANGE

So you have a new music director or a new product! Don't tell the news sotto voce. Make your pronouncements fortissimo; add some embellishment.

Speakers: **Patricia Gessner**, director of marketing, San Francisco Symphony
Tom Gulick, director of marketing and public relations, San Francisco Opera

Sponsored by MSGI/MetroArts

Elizabethan D 2. DO, RE, MI, FA, SOL: BUILDING A SUCCESSFUL YOUTH ORCHESTRA

The notes are the same, but how can you stay in tune when your ensemble is at the pre-adult stage? Dealing with the logistics of touring, recording, commissioning, funding — even rehearsing — takes on added dimension in this scenario.

Moderator: **Asher Raboy**, music director, Napa Valley Symphony; conductor, Santa Rosa Symphony Youth Orchestras
 Panelists: **Ron Gallman**, education director, San Francisco Symphony Youth Orchestra
Mary Gifford, manager, Sacramento Youth Symphony
Sue Rumley, executive director, San Diego Youth Symphony

9:30 am-
12:00 pm
Elizabethan
A and B

DUO RECITAL: SING ALONG WITH HENRY AND PETER

Two masters of the helm take the spotlight to demonstrate effective management techniques using a case study.

Speakers: **Henry Fogel**, *president, Chicago Symphony Orchestra*
Peter Pastreich, *executive director, San Francisco Symphony*

Sponsored by The Law Firm of Keesal, Young & Logan

10:45 am-
12:00 pm
Elizabethan C

Concurrent Sessions

1. THE WELL-TEMPERED PEDAGOGUE: TRAIN MUSICIANS TO BECOME EFFECTIVE EDUCATORS

A great educator, like an accomplished musician, requires training and practice to reach top form. How can we train our musicians to become effective educators?

Speaker: **Marsha Mabrey**, *music director, Seattle Philharmonic; former director of education, Philadelphia Orchestra and Detroit Symphony*

Host: **Tim Beswick**, *director of operations, San Jose Symphony*

Elizabethan D **2. UN BALLO IN MASCHERA AND OTHER GREAT FUND-RAISING EVENTS**

Mozart loved to party but died penniless. If only he'd had the opportunity to attend this session he might have learned to make his social life supplement his pocketbook! A presentation of clever fund-raising events.

Moderator: **Diana Forney**, *president, Santa Rosa Symphony League*

Panelists: **Judy Johnson**, *board member, Napa Valley Symphony*
Mark A. Jordan, *director of campus events, University of California, San Francisco*
Sharon Robison, *president-elect, Santa Rosa Symphony League*
Mitzi Tonai, *director of development, Philharmonic Society of Orange County*

12:15 pm-
2:00 pm
Colonial
Room

DIVERTISSEMENT: LUNCHEON

Getting Them to Get it



Guest Speaker:
Robert Kapilow,
*composer, conductor,
and commentator*

Mr. Kapilow has had a versatile career, bringing new audiences to classical music in imaginative ways. He has recently been appointed composer/conductor for the Bank of Boston Celebrity Series'

family music program and artistic advisor to their "Project Discovery." In preparation for Classical Music Month, he is creating an outreach program for National Public Radio. He is seen regularly on public television and heard on National Public Radio's *Performance Today*, explaining "What Makes It Great."

Introduction: **Bruce D. Thibodeau**, *executive director, Los Angeles Chamber Orchestra*

Sponsored by Columbia Artists Management, Inc.

2:15 pm-
3:30 pm
Elizabethan A

Concurrent Sessions

1. THEME AND VARIATIONS: IS COMMISSIONING FOR EVERYONE?

The commissioning process is deeply rooted in musical tradition. But so are the attendant decisions and potential conflicts. How do you select a composer? Who pays for what? This session explores the issues from the vantage point of the commissioning organization and the composer.

Moderator: **Jung-Ho Pak**, *music director, Idylwild School of Music; principal conductor, Disney Young Person's Symphony*

Panelists: **Chen Yi**, *composer-in-residence, The Women's Philharmonic*
Richard Early, *general manager, San Francisco Symphony*
Robert Kapilow, *composer*

Sponsored by Stephen Dunn & Associates

Elizabethan C 2. LEARN THE SCORE: THE 5 BIGGEST MISTAKES OF EMPLOYERS

Have you ever failed to conduct an annual performance appraisal for an employee? Have you ever hired an employee without conducting a thorough check of references? Virtuoso management requires attention to myriad details. This session will provide practical suggestions for avoiding serious employment mistakes.

Speaker: **Mary Lee Thomson**, attorney, Littler, Mendelson, Fastiff, Tichy & Mathiason
 Host: **Millie Mitchell**, general manager, California Symphony

Elizabethan D 3. ALL ABOARD FOR 1 VIOLIN, 1 VIOLA AND 1 CEO: TAKING TRUSTEESHIP SERIOUSLY

This concerto grosso requires careful casting and nurturing of those selected for leading roles. Review the score for boards of directors — from orientations to strategic planning.

Speaker: **Louis G. Spisto**, executive director, Pacific Symphony Orchestra

Sponsored by The Law Firm of Musick, Peeler & Garrett

3:45 pm-5:00 pm
California West
POINT, COUNTERPOINT: CLOSING PLENARY SESSION



Henry Fogel, president, Chicago Symphony Orchestra

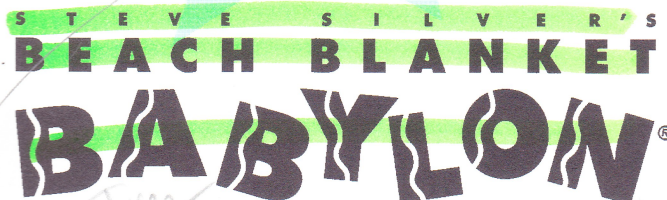


Peter Pastreich, executive director, San Francisco Symphony

Guest Speakers: **G. Michael Gehret**, vice president for development and marketing, Chicago Symphony Orchestra

7:00 pm
Club Fugazi
678 Green St. (at Powell)
North Beach
GRAND FINALE: BEACH BLANKET BABYLON

Bring your Conference experience to a memorable conclusion by joining friends and colleagues at this festive closing event. A Steve Silver production, Beach Blanket Babylon has outdistanced even the famed *Ziegfeld Follies* as the longest-running show of its kind.



DoubleTree
 Tin Pan alley
 Pas. POPS
SUNDAY, AUGUST 4

2:00 pm
Stern Grove
STERN GROVE FESTIVAL
 San Francisco Ballet
Emil de Cou, conductor

If you're staying over, join other ACSO Conference attendees at the Stern Grove Festival. We have special table seating reserved. The concert starts at 2:00 pm, but arrive by **12 pm** for your spot. Bring a lunch or buy one there. The grove is a beautiful outdoor setting — afternoons can be quite cool; wear appropriate clothing. You are on your own for transportation. The Grove is at 19th Avenue and Sloat Boulevard.

Join us in Pasadena for the 29th Annual Conference August 7 - 9, 1997

**1995-1996
ACSO BOARD OF DIRECTORS**

EXECUTIVE COMMITTEE

- President: **Mark A. Jordan**, concertmaster,
Modesto Symphony
- Secretary: **Stephen J. M. Morris**, past president,
Pasadena Symphony
- Treasurer: **Bruce D. Thibodeau**, executive director,
Los Angeles Chamber Orchestra
- Vice President /Development:
Christopher Minnes, development director,
Long Beach Symphony
- Past President: **Louis G. Spisto**, executive director,
Pacific Symphony Orchestra

BOARD OF DIRECTORS

- Karine Beesley**, director, The John Anson Ford Theatre Foundation
- Tim Beswick**, director of operations, San Jose Symphony
- Barbara Burger**, marketing director, Santa Barbara Symphony
- Amy Carson-Dwyer**, artists representative, Colbert Artists Mgmt.
- Dean Corey**, executive director, Philharmonic Society of Orange Co.
- Denis de Coteau**, music director, San Francisco Ballet
- Patricia Gessner**, director of marketing, San Francisco Symphony
- Mimi Horowitz**, executive director, Peninsula Symphony
- Mitchell Sardou Klein**, music director, Peninsula Symphony North
- Diane Lent**, president, Modesto Symphony
- Linda Sue Marks-Guarnari**, musician, Long Beach Symphony
- Sharon C. McNalley**, board member, Los Angeles Chamber Orchestra
- Jim Medvitz**, director of operations, Pacific Symphony Orchestra
- Millie Mitchell**, general manager, California Symphony
- Thomas Noonan**, general manager, Inn at the Opera, San Francisco
- Helen C. Norton**, Riverside County
- Lynn Osmond**, executive director, Sacramento Symphony
- Jung-Ho Pak**, music director, Idylwild School of Music
- Asher Raboy**, music director, Napa Valley Symphony
- Joseph Truskot**, executive director, Monterey County Symphony
- Elizabeth Ustach**, director of development, Modesto Symphony
- Cynthia Weichel**, manager, Santa Rosa Symphony Youth Orchestras

DIRECTORS EMERITI

- Deborah Rutter Card**, executive director, Seattle Symphony
- Stewart Comer** (deceased)
- Suzanne Dewar**, Pebble Beach
- Pauline Fisher**, executive director, Santa Rosa Symphony
- G. Michael Gehret**, vice president, development and marketing,
Chicago Symphony
- Don Jones**, Napa Valley
- Jean Squair**, Santa Rosa

STAFF

- Kris Woodard Saslow**, executive director
- Jennifer Pimbley**, administrative assistant

Association of California Symphony Orchestras
P.O. Box 255445, Sacramento, CA 95865
(916) 484-6744 • FAX (916) 484-0503 • KSaslow@aol.com

The Music of Gordon Getty



"An assured composer in full command of a refreshingly direct style"
NBC - TV

"Getty has a style of his own to go with a grand theatrical flair bursting
with wit, irony and nobility"
San Jose Mercury News

"Gordon Getty's music proved haunting and seductive"
Hollywood Reporter

RALPH PAVONE PRODUCTIONS
988 Market St., Ste. 303 San Francisco, CA 94102
(415) 441-0802

Beverly Serra-Brooks

Experience the Romantic Tradition



Schumann Chopin
Brahms Tchaikovsky Grieg
Beethoven Liszt



Mozart Rachmaninoff

Special Feature
Robert and Clara Schumanns' Concertos
Back - To - Back
As The Persona Of Clara Schumann



HUMMINGBIRD ARTIST MANAGEMENT
(818) 449-1417 & Fax



NPR'S Weekend Edition broadcasts Stef's music to millions of listeners each Sunday, critics acclaim this Concord recording artist as soloist with symphony and/or swinging with his jazz trio.

With the Kansas City Symphony:
"Scaggiari- a last minute replacement for the previously scheduled Marion McPartland, offered up a breezy set of jazz influenced arrangements with lush string accompaniment, running the gamut from Gershwin to Chopin."
- *Kansas City Star, Jan 15, 1996*

On his latest recording: "Stefan Out"
"Stefan Scaggiari is a wonder. Like Oscar Peterson, Monty Alexander and Gene Harris, Scaggiari's geysers are no less spectacular than Yellowstone's Old Faithful. Scaggiari has a touch for modern swing that's as natural (and powerful) as the oceans' tides. Stef's pianistics operate on multiple levels, appealing to connoisseurs and the general public alike."
- *Jazz Times, May 1996*

STEFAN SCAGGIARI
piano

SIEGEL ARTIST MANAGEMENT

Ethel Siegel, Special Projects
Tel: (202) 966-0003 Fax: (202) 363-38111
3003 Van Ness St., N.W. Washington, D.C. 20008

CLASSICAL PERFORMING ARTISTS MANAGEMENT

7758 Ludington Place La Jolla, CA 92037

Constance Mullin, Manager

FAX:(619) 456-1752 TEL:(619) 456-3878

e-mail: 76142.2446@compuserve.com

Talent Agency/Calif. Lic. # TA 1548

NEIL RUTMAN, Pianist

- Winner: Busoni, Casadesus, Joanna Hodges, and Bach Int'l Competitions
- 1st Place Concert Artist Guild
- Orchestral Engagements (partial list)
 - Academy of London
 - Arkansas Symphony
 - Erie Philharmonic
 - Long Beach Symphony
 - Modesto Symphony
 - Peninsula Symphony
 - San Jose Symphony

**Singers for Symphony,
Oratorio, and Pops**

Sopranos

Susan Gundunas
Kerry O'Brien
Melody Rossi
Virginia Sublett
Sylvia Wen

Mezzo-Sopranos

Elsbeth Franks
Martha Jane Weaver

Tenors

Bruce Johnson
Robert MacNeil
Thomas Oberjat

Baritones

Dale Morehouse
Douglas Nagel

Bass

Peter Klaveness

I Love Children



"May I develop and/or deliver children's programs for you? I will 'build to suit' your programming needs. Script and repertoire packages are also available. Come and see my display in the conference resource room."

DAVID H. YOUNG, D.M.A.,

has nine years experience developing, writing, performing, conducting and narrating children's concerts in Southern California. References: L.A. Philharmonic Education Office, Music Center Education Division, Long Beach Symphony, Santa Barbara Chamber Orchestra, Philharmonic Society of Orange County, L.A. Chamber Orchestra, and many others.

YOUNG MUSIC

356 S. Swall Drive, Beverly Hills, CA 90211
(310) 659-4016 or email: daveyboy@earthlink.net

IMG Artists *North America*

Male Sponsor?

Piano

Leif Ove Andsnes
Stephen Hough
Jeffrey Kahane
Hae-Jung Kim
Evgeny Kissin
Ivan Moravec
Eldar Nebolsin
Murray Perahia
Navah Perlman
Awadagin Pratt•
André Watts

Violin

Joshua Bell
Hilary Hahn
Leila Josefowicz
Yoon Kwon
Itzhak Perlman
Dmitry Sitkovetsky

Cello

Lynn Harrell
Truls Mørk
Heinrich Schiff

Flute

James Galway
Carol Wincenc

Recorder

Michala Petri

Clarinet

David Shifrin

Guitar

Christopher Parkening

Conductors

Daniel Borkwith
Riccardo Chailly
Michael Christie
Thomas Dausgaard
Alan Gilbert
Lynn Harrell•
Jeffrey Kahane•
David Lockington
Hermann Michael
John Nelson
Heinrich Schiff•
Dmitry Sitkovetsky•
Maximiano Valdes
Hans Vonk
Franz Welser-Möst

Special Attractions

Michael Kamen, *pops conductor*
The King's Singers▲
Quartetto Gelato

Films with Symphony Orchestra

"Alexander Nevsky"
Scenes from "Ivan the Terrible"
A Symphonic Night at the Movies

Sopranos

Barbara Bonney
Kathleen Brett
Christine Brewer
Laura Claycomb
Lynne Dawson
Nancy Gustafson
Barbara Hendricks
Judith Howarth
Camellia Johnson
Yvonne Kenny
Dominique Labelle
Ann Panagulias
Kiri Te Kanawa
Dawn Upshaw

Orchestral Offerings 1997-98 Season

Mezzo-Sopranos

Lorraine Hunt
Mary Ann McCormick
Susanne Mentzer
Phyllis Pancella
Paula Rasmussen

Countertenor

Michael Chance

Tenors

John Mark Ainsley
Richard Clement
Gregory Cross
Gordon Gietz
Hong-Shen Li
Matthew Lord
John Horton Murray
Dennis Petersen
Giuseppe Sabbatini
Jianyi Zhang

Baritones

Gregg Baker
Haijing Fu
François Le Roux
Brett Polegato
Andrew Schroeder
William Shimell
Oliver Widmer

Bass-Baritones

Nathan Berg
Gerald Finley

Basses

Peter Rose
Willard White

● Available for play/conduct engagements
▲ Except Canada

IMG Artists North America is part of IMG
Artists worldwide and a division of IMG
(Mark H. McCormack, Chairman & CEO)

Edna Landau
Managing Director

Elizabeth Sobol
Associate Director

Linda Marder
Director of Booking / Artist Manager

Earl Blackburn
Artist Manager

Martha Bonta
Associate, Artist Management

Nancy Gambuzza
Associate Director of Booking/
Dance Manager

Josy Koumans
Booking Manager

Julia Power
Booking Manager

William Bish
Booking Assistant

Lisa Mackie
Contracts/Booking Assistant

Barbara Wing
Director, Artist Services

Steven Shaiman
Director, Artist Services/Publicity

Mary Camilleri
Associate, Artist Services

Christine Badaracco
Associate, Artist Services

Rebecca Boyle
Assistant to Ms. Landau

IMG Artists

22 East 71st Street
New York, New York 10021
212/772-8900 • Fax 212/772-2617
E-mail: artistsny@imgworld.com

Susana Meyer
Vice President, Vocal Division

Alison Pybus
Vice President, Vocal Division

Michael Bartlett
Associate, Vocal Division

Ruth Nott
Associate/Artist Services,
Vocal Division

Austin Wrubel
Assistant, Vocal Division

Vocal Division Only:

420 West 45th Street
New York, New York 10036
212/541-5640 • Fax: 212/265-5483

Have
A Sponsor?



**SCHWEICKERT
& COMPANY**

INSURANCE AGENTS, BROKERS & MANAGERS

Managers of the

ACSO

Workers' Compensation
Insurance Program

**714-436-6400
1-800-748-6293**

Serving all of the
insurance needs of the
performing arts community
in California for over 20 years.

BECOME AN ACSO DONOR!

Give a gift to the ACSO Annual Fund
and your name will be
entered into a drawing.

You'll be eligible to win
two wonderful prizes including:

A NIGHT AT
INN AT THE OPERA
AND 2 TICKETS TO THE
SAN FRANCISCO SYMPHONY
(subject to availability)

A NIGHT AT
THE WESTIN ST. FRANCIS HOTEL
AND 2 TICKETS TO THE
SAN FRANCISCO SYMPHONY
(subject to availability)

SEE AN ACSO BOARD MEMBER
OR MAKE YOUR DONATION AT
THE REGISTRATION DESK IN
CALIFORNIA EAST

Drawing will take place at the
Closing Plenary Session,
Saturday, August 3.
You need not be present to win.



Conductors

DAVID ANDRÉ
BOGIDAR AVRAMOV
DAVID LEWIS CROSBY
PAUL DURY
WES KENNEY
STEFAN KOZINSKI
JERE LANTZ
NAVROJ MEHTA
THOMAS OSBORN
EARL ROSE,
ALBERT ROSEN
GERHARD SAMUEL
KERRY STRAITTON
RICHARD WILLIAMS

Singers

PAMELA HICKS, *Soprano*
ANDREA BAKER, *Mezzo-Soprano*
KATHARINE LAWTON BROWN,
Mezzo-Soprano
JOSEPH MEYERS, *Tenor*
DAVID ROMANO, *Tenor*
FRANZ HUIJTS, *Baritone*
ROGER MCCRACKEN, *Bass-Baritone*

Violinists

LEVON AMBARTSUMIAN
ANTON BARAKHOVSKY
MARIA KIRK

Guitarists

ADAM HOLZMAN, *Co-commissioner,*
Samuel Adler's First Guitar
Concerto, 1996-97 Premiere Season

Pianists

THE ANGELO PIANO DUO
VLADIMIR MISCHUK
ORI STEINBERG

Ensembles

ARCO CHAMBER ORCHESTRA,
Moscow
SHAROMOV VOCAL ENSEMBLE,
Novosibirsk
LEGE ARTIS CHAMBER CHOIR,
St. Petersburg
MUSICA PETROPOLITANA,
A Baroque Ensemble, St. Petersburg

Special Attractions

GEORGE ENESCU PHILHARMONIC
ORCHESTRA BUCHAREST
FIVE BY DESIGN'S RADIO DAYS
JUDY GLEN, SPAGHETTI OPERA,
Australia's answer to Anna Russell
AN EVENING OF
GILBERT AND SULLIVAN
EARL ROSE, TRIO
EARL ROSE POPS ORCHESTRA

World Music

HAMZA EL DIN

Composers and Arrangers

STEFAN KOZINSKI
ANNETTE LE SIEGE
RON MCFARLAND
GERHARD SAMUEL
JORDAN WARING

Joanne Corbett-Barnes, President
Michael Kaulkin, Associate

2101 California Street, Suite 2
San Francisco, CA 94115-2870
Telephone (415) 563-2505
Telefax (415) 346-5295
e-mail: corbarts@corbettarts.com
<http://www.corbettarts.com/>

CORBETT
ARTS MANAGEMENT, LTD.



Alain Lefèvre
piano

*"In a season already
marked by virtuoso
talent, Lefèvre's perfor-
mance is still going to
stand out as one of the
most remarkable—
perhaps not just of the
season, but of the de-
cade."*

— Sacramento Bee

*"It's hard to imagine a
better performance or
recording than this one
with the brilliant soloist
Alain Lefèvre."*

— Symphony Magazine



international artists group
212.987.3038 • 212.369.3103 fax 102053.1051@compuserve.com



International Artists Group

c o n d u c t o r

Lukas Foss

Justus Frantz

Derrick Inouye

Yehudi Menuhin

Stephen Rogers
Radcliffe

p i a n o

John Bayless

Alain Lefèvre

Nikolai Lugansky

Ralph Markham &
Kenneth Broadway

v i o l i n

Aaron Rosand

c o m p o s e r

Joanna Bruzdowicz

Keith Pruitt

d i r e c t o r

t s e a n b i c k e r t o n

a s s o c i a t e

v a l e n t i n e k a n g

d i r o f m a r k e t i n g

t h o m a s j h u d o c k

212.987.3038 tel

212.369.3103 fax

102053.1051@compuserve.com

IAG*Music*

www.pegasusnet.com/iagmusic